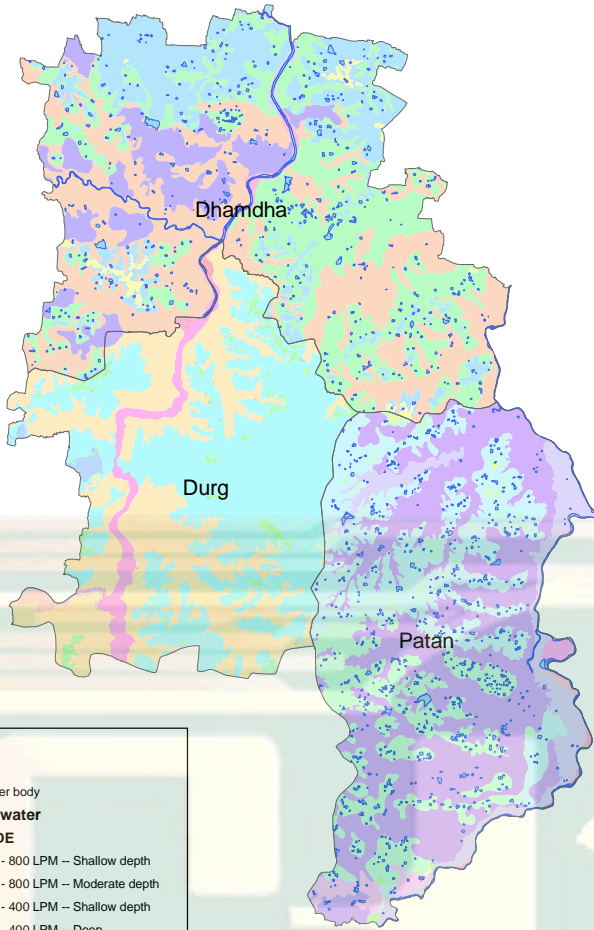


# DISTRICT- DURG



## Ground water Prospect Map



**Legend**

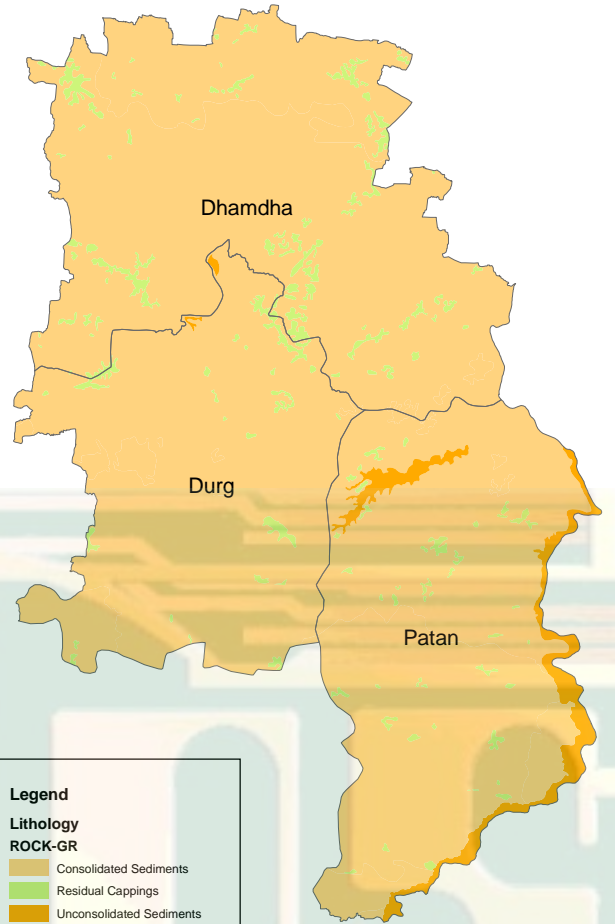
- Water body

**Ground water**

**GW\_CODE**

- 400 - 800 LPM -- Shallow depth
- 400 - 800 LPM -- Moderate depth
- 200 - 400 LPM -- Shallow depth
- 200 - 400 LPM -- Deep
- 100 - 200 LPM -- Shallow depth
- 100 - 200 LPM -- Moderate depth
- 100 - 200 LPM -- Deep
- 50 - 100 LPM -- Shallow depth
- 50 - 100 LPM -- Moderate depth
- 50 - 100 LPM -- Deep
- 10 - 50 LPM -- Shallow depth
- < 10 LPM (Prospects along valley)

## Lithology Map



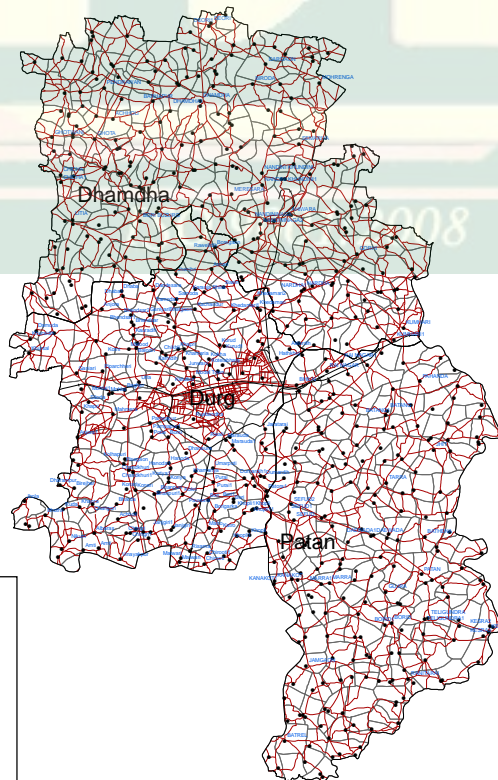
**Legend**

**Lithology**

**ROCK-GR**

- Consolidated Sediments
- Residual Cappings
- Unconsolidated Sediments

## Location Map



**Legend**

- Settlement
- Road
- Rail